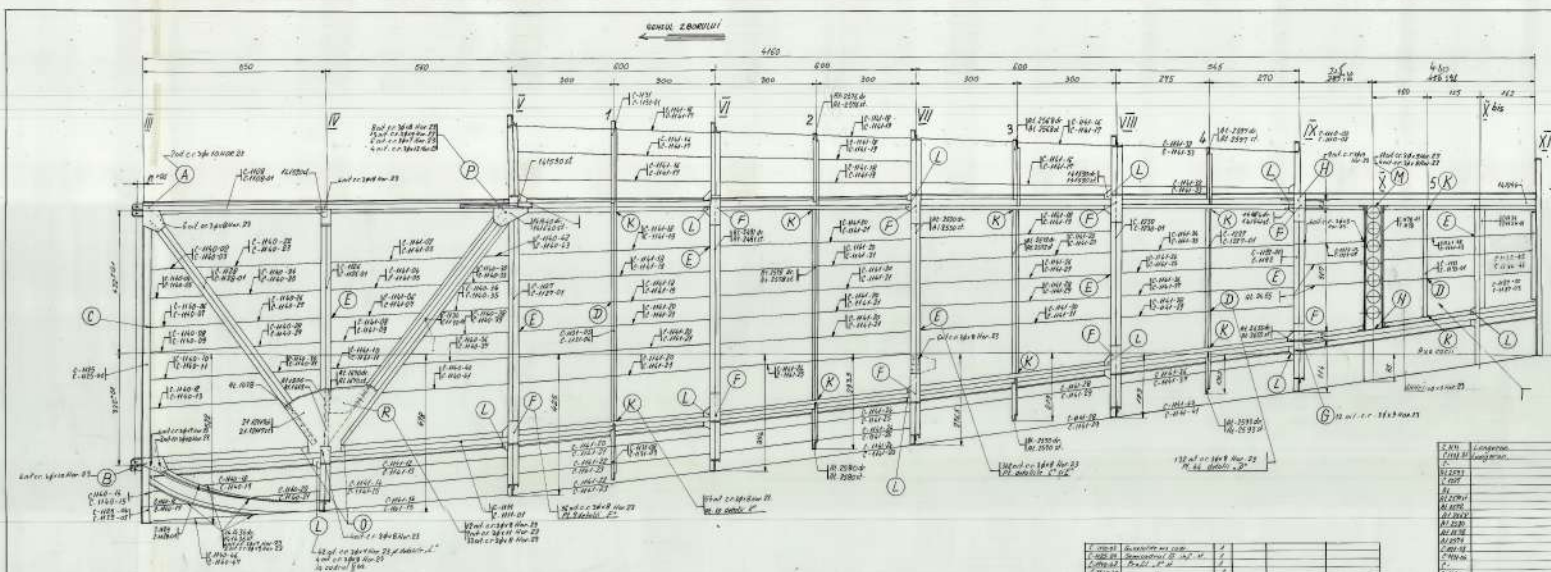


Part Name	Quantity	Material	Notes
Link 10	1	Steel	
Link 12	1	Steel	
Link 16	1	Steel	
Link 18	1	Steel	
Link 20	1	Steel	
Link 22	1	Steel	
Link 24	1	Steel	
Link 26	1	Steel	
Link 28	1	Steel	
Link 30	1	Steel	
Link 32	1	Steel	
Link 34	1	Steel	
Link 36	1	Steel	
Link 38	1	Steel	
Link 40	1	Steel	
Link 42	1	Steel	
Link 44	1	Steel	
Link 46	1	Steel	
Link 48	1	Steel	
Link 50	1	Steel	
Link 52	1	Steel	
Link 54	1	Steel	
Link 56	1	Steel	
Link 58	1	Steel	
Link 60	1	Steel	
Link 62	1	Steel	
Link 64	1	Steel	
Link 66	1	Steel	
Link 68	1	Steel	
Link 70	1	Steel	
Link 72	1	Steel	
Link 74	1	Steel	
Link 76	1	Steel	
Link 78	1	Steel	
Link 80	1	Steel	
Link 82	1	Steel	
Link 84	1	Steel	
Link 86	1	Steel	
Link 88	1	Steel	
Link 90	1	Steel	
Link 92	1	Steel	
Link 94	1	Steel	
Link 96	1	Steel	
Link 98	1	Steel	
Link 100	1	Steel	

Assembly instructions and notes:

- Check all dimensions and tolerances.
- Ensure proper fit and clearance at all joints.
- Use appropriate lubrication for moving parts.
- Verify the operation of the mechanism before final assembly.

Drawing Date: 1950-01-15
 Drawing No: C-1000-01
 Scale: 1:1



Desenul reprezintă planul structurat
pentru etajul nr. 100

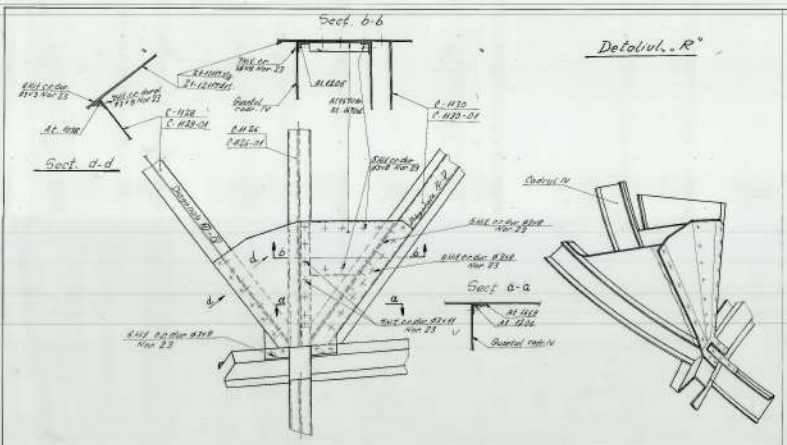
Amplasamentul este valabil numai
pe prima scara

Numar	Descriere	Unitate	Valoare
1
2
3
4
5
6
7
8
9
10
11
12
13
14
15
16
17
18
19
20

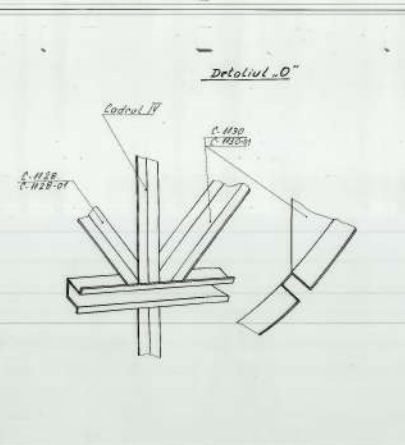
Numar	Descriere	Unitate	Valoare
1
2
3
4
5
6
7
8
9
10
11
12
13
14
15
16
17
18
19
20

Numar	Descriere	Unitate	Valoare
1
2
3
4
5
6
7
8
9
10
11
12
13
14
15
16
17
18
19
20

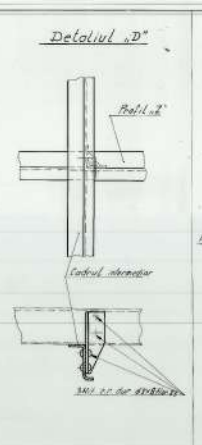
Numar	Descriere	Unitate	Valoare
1
2
3
4
5
6
7
8
9
10
11
12
13
14
15
16
17
18
19
20



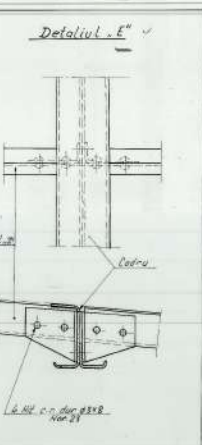
Detaliul „R”



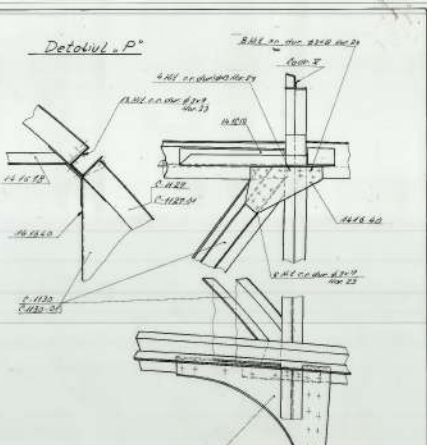
Detaliul „D”



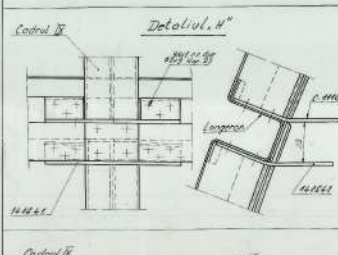
Detaliul „D”



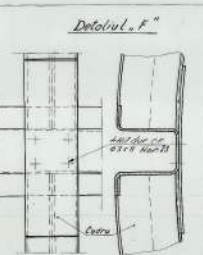
Detaliul „E”



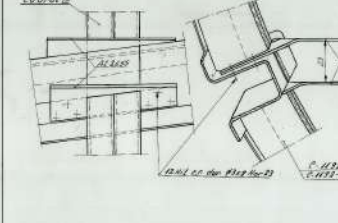
Detaliul „P”



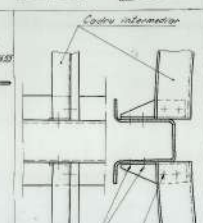
Detaliul „W”



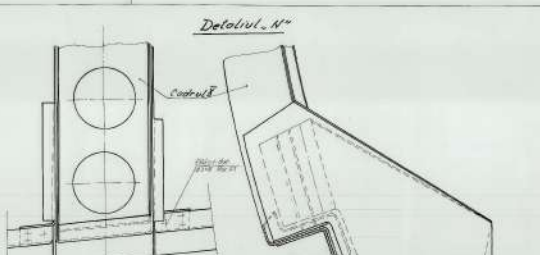
Detaliul „F”



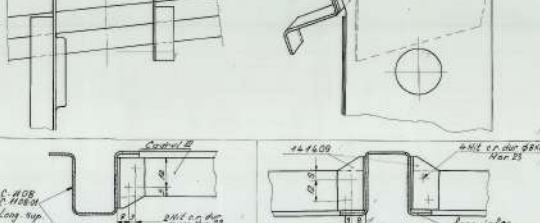
Detaliul „G”



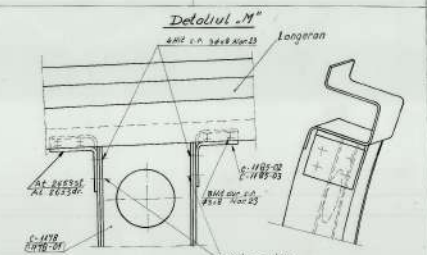
Detaliul „K”



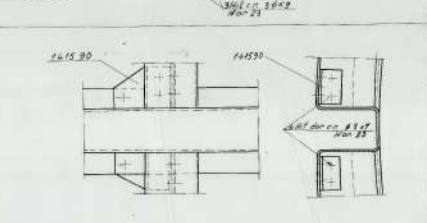
Detaliul „N”



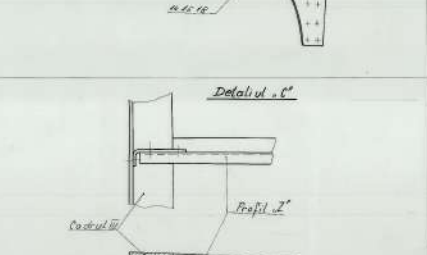
Detaliul „A”



Detaliul „M”



Detaliul „L”



Detaliul „O”

NOTA: Pe cadrul 5^{le} la lung. inf. se vor monta 2x10x10x20 la lung. sup. 2x10x10x20 la lung. inf. Pe cadrul 7^{le} la lung. sup. se vor monta 2x10x10x20 la lung. sup. 2x10x10x20 la lung. inf.

PR. nomenclatură veș. Avion C-1191

Tip	Descrierea	Unit.	Material	Dimensiuni	Stoc.
1
2
3
4
5
6
7
8
9
10
11
12
13
14
15
16
17
18
19
20
21
22
23
24
25
26
27
28
29
30
31
32
33					

